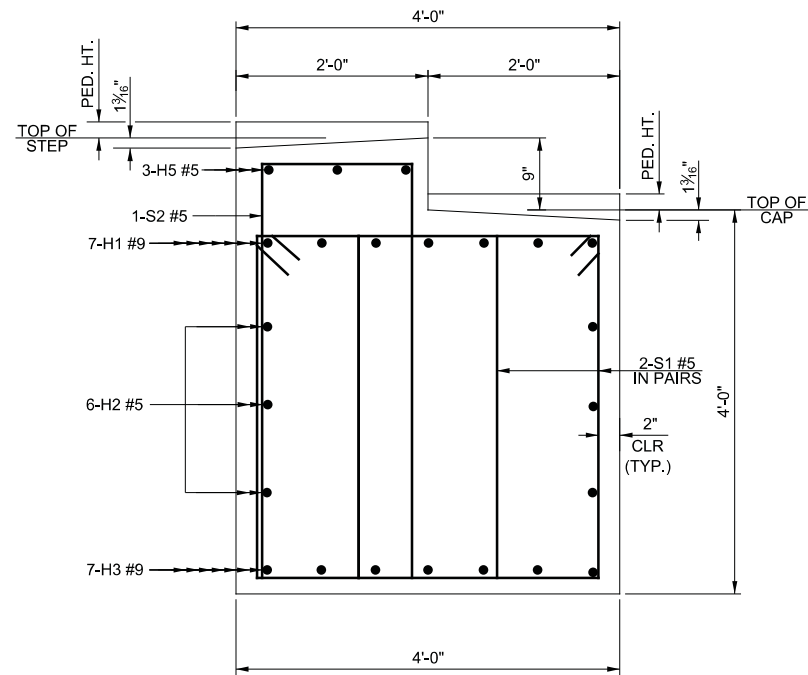
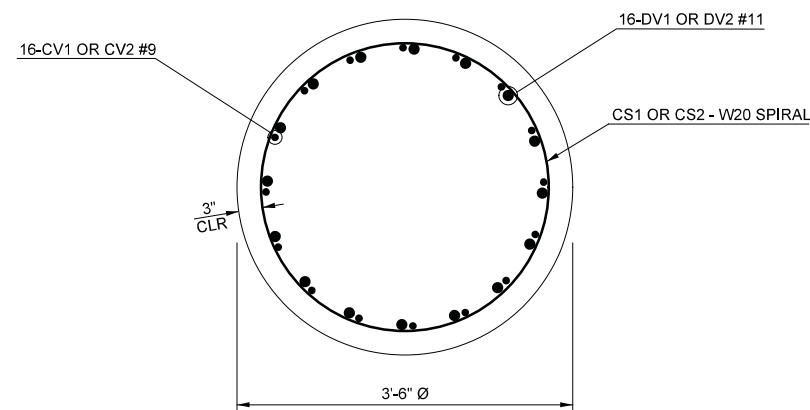


G:\projects\2014\1403010766-CE08 Pler Design Kay County\Civil\CAD\Structural\14766-PIER DETAIL.S42.dgn

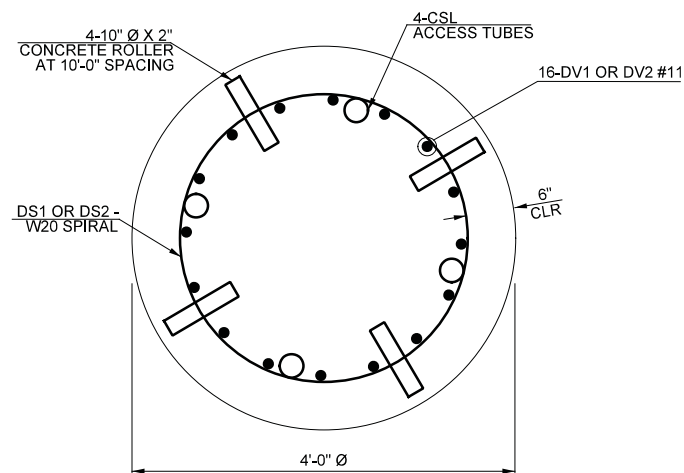
PRINT DATE: 5/10/2017



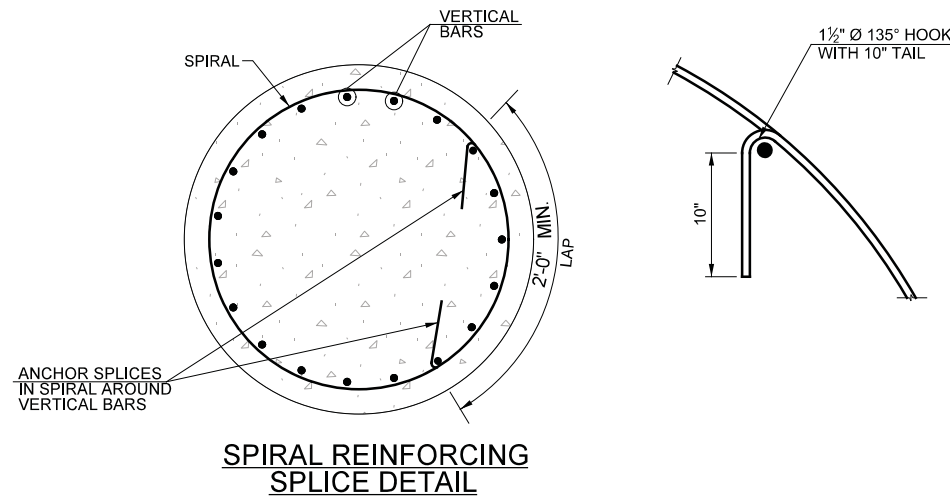
SECTION A-A



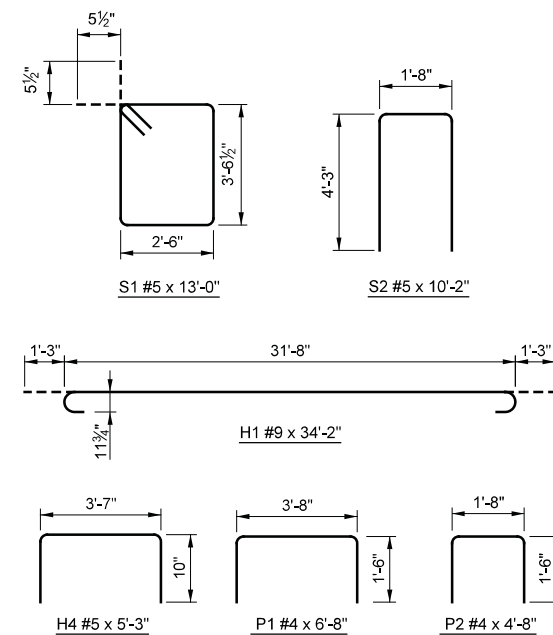
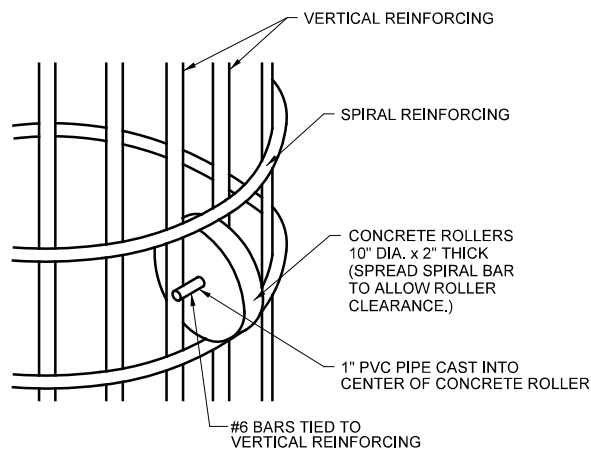
SECTION B-B



SECTION C-C



DETAIL OF ROLLER INSTALLATION



PIER QUANTITIES				
ITEM	UNIT	PIER NO.1	PIER NO.2	TOTAL
CLASS A CONCRETE	CY	27.5	27.1	54.6
REINFORCING STEEL	LB	5050	4990	10,040
DRILLED SHAFT 48" DIAMETER	LF	48	58	106
CROSSHOLE SONIC LOGGING	EA			1

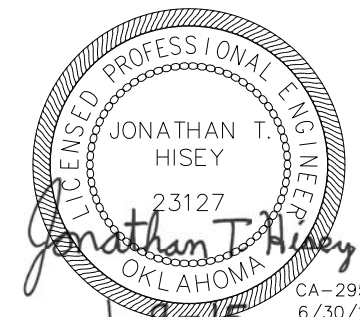
PIER NO. 1 BAR LIST				
PLAIN REINFORCING				
MARK	SIZE	NO.	FORM	LENGTH
H1	#9	7	BENT	34'-2"
H2	#5	6	STR.	31'-8"
H3	#9	7	STR.	31'-8"
H4	#5	6	BENT	5'-3"
H5	#5	3	STR.	31'-8"
P1	#4	24	BENT	6'-8"
P2	#4	40	BENT	4'-8"
S1	#5	72	BENT	13'-0"
S2	#5	36	BENT	10'-2"
CV1	#9	32	STR.	12'-1"
CS1	W20	2	BENT	181'-6"
DRILLED SHAFT				
DV1	#11	32	STR.	30'-1"
DS1	W20	2	BENT	466'-11"

PIER NO. 2 BAR LIST				
PLAIN REINFORCING				
MARK	SIZE	NO.	FORM	LENGTH
H1	#9	7	BENT	34'-2"
H2	#5	6	STR.	31'-8"
H3	#9	7	STR.	31'-8"
H4	#5	6	BENT	5'-3"
H5	#5	3	STR.	31'-8"
P1	#4	24	BENT	6'-8"
P2	#4	40	BENT	4'-8"
S1	#5	72	BENT	13'-0"
S2	#5	36	BENT	10'-2"
CV2	#9	32	STR.	11'-8"
CS2	W20	2	BENT	173'-2"
DRILLED SHAFT				
DV2	#11	32	STR.	35'-1"
DS2	W20	2	BENT	560'-0"

① INCLUDED IN THE CONTRACT UNIT PRICE OF DRILLED SHAFT

NOTES:

- SPIRAL BARS SHALL CONFORM TO AASHTO SPECIFICATIONS. W20 SPIRAL BAR LENGTHS SHALL INCLUDE LAP.
- ALL EDGES OF PIER CAP SHALL HAVE A 1/2" CHAMFER. ALL PEDESTAL EDGES SHALL HAVE A 3/8" CHAMFER.
- ALL BAR BEND DIMENSIONS ARE OUT TO OUT.
- REINFORCING BARS PROJECTING FROM DRILLED SHAFT SHALL NOT BE CONSIDERED ADDITIONAL PAY LENGTH FOR DRILLED SHAFT.
- CONCRETE USED IN THE CONCRETE ROLLERS SHALL HAVE A MINIMUM 28 DAY COMPRESSIVE STRENGTH OF 4000 PSI.
- ALL CLEARANCES ARE 2" UNLESS OTHERWISE SPECIFIED.



CA-2958  
6/30/15

DESIGN	JTH		EW-18 OVER BOIS D' ARC CREEK	KAY CO.
DRAWN	HWL		<b>OKLAHOMA DEPARTMENT OF TRANSPORTATION</b>  <b>PIER DETAILS</b> (2 OF 2)	
CHECKED	JTH			
APPROVED				
SQUAD	CE08 / MKEC			
STATE JOB NO. 28433(04)			SHEET NO. B007	